

OneStop™ Self-Service Software

OneStop™ combines an engaging interface for patron self-service with a customisable platform to showcase library news, events and more.

Modern and intuitive, OneStop works with EnvisionWare's hardware or your existing hardware to provide a cost-effective and flexible software solution.



ENVISIONWARE®

ENVISIONWARE®

SELF-CHECKOUT AND SO MUCH MORE

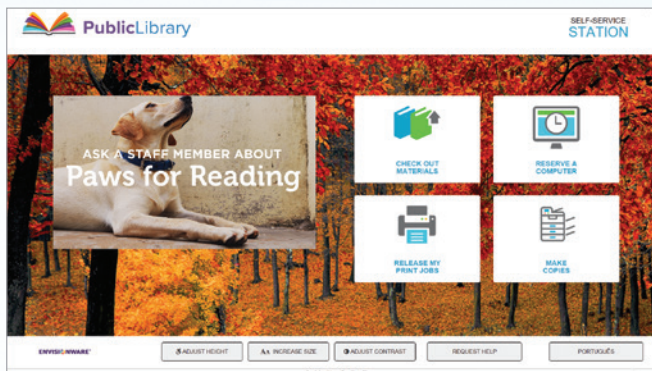
With EnvisionWare's OneStop software your patrons enjoy the ease of use they've come to expect with a self-checkout system combined with the flexibility, efficiency and integration you need to keep your library running smoothly.

OneStop integrates with EnvisionWare's full suite of self-service solutions for time and print management, fine payment and more. This all-in-one solution saves on hardware costs and space, and provides a single interface for patron self-service.

- Integrate with EnvisionWare's PC Reservation®, Reservation Service and LPT:One™ software for computer sign-up and print release
- Add Copy Payment Manager™ for centralised management of copy payment from cash, account and credit cards
- Integrate with EnvisionWare® eCommerce Services™ for fine payment and account deposit
- Add EnvisionWare® Branch Manager™ for email receipts, staff alerts and help requests
- Enable patrons to checkout RFID media with EnvisionWare® Media Case Controller (EMC²)™
- Use OneStop™ in the Intelligent Returns Station mode as an RFID book drop or staff returns station

OneStop is compatible with barcode and RFID technology including RFID-based patron cards.



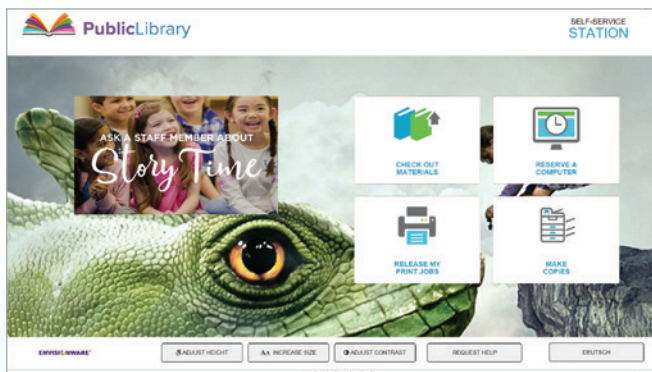


ENGAGE PATRONS

OneStop takes customisation to a new level, enabling you to use your own photos to showcase your library or community, select from a bank of out-of-the box themes or a combination.

Standard themes include:

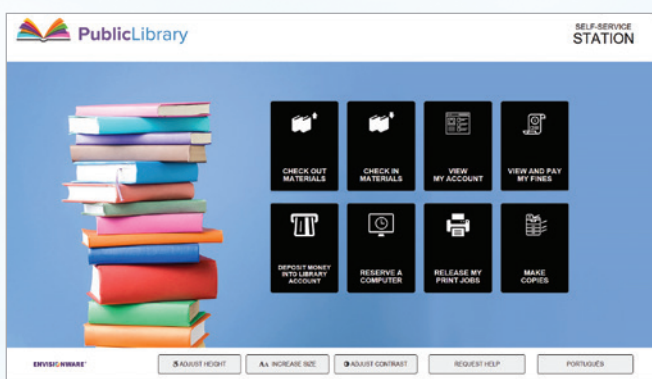
- **Seasons:** Choose from multiple images each season to keep your self-checkout interface fresh and relevant throughout the year
- **Children's Imaginative:** Whimsical and eye-catching photos to draw the attention of even the youngest readers
- **Reading Classic:** Engaging photos for patrons of all ages
- **News & Events:** Promote your library events with these out-of-the box announcements for book clubs, story times, teen programs and more



Themes can be used together or separately, or used in combination with your own imagery, announcements and news feeds.

ACCESSIBILITY FEATURES AT YOUR FINGERTIPS

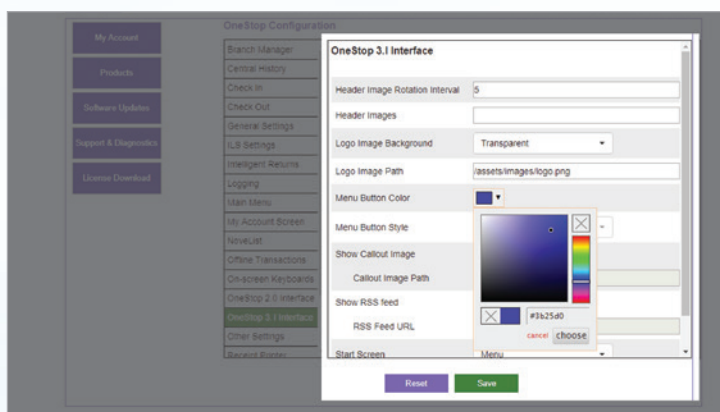
Features such as high contrast mode, increased font and the ability to adjust the screen height are prominently displayed. These features are available at the touch of a button making it simple for patrons to select the tools they need for an easy and comfortable self-checkout experience. Patrons can press the Request Help button to call for further assistance.





PROMOTE LIBRARY SERVICES AND EVENTS

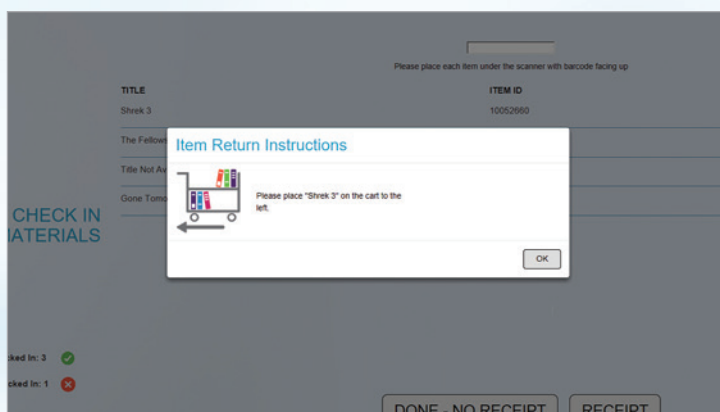
With OneStop you can customise the screens to display your own photos or graphics. You can also stream library news from your library's website or other feeds in real time on the screen.



CUSTOMISE AND CONFIGURE WITH EASE

Make OneStop an extension of your library:

- Add your library's logo
- Change the colour palette of the interface to match your branding
- Leverage the included API to create a fully customized patron experience or custom circulation application
- Enable patrons to change the language display with the click of a button
- Customise the language options to suit your community
- Select directional graphics to show patrons where to return materials
- Customise receipt header and footer based on your library's needs
- Provide patrons with the ability to update their email*
- Allow patrons to view their place on the holds list†



For Libraries that prefer to offer patrons more choices in fine payments, OneStop enables patrons to touch to select which fines they want to pay from an itemized list during checkout*.



The image is a composite. The background is a photograph of a person lying on their back on a grassy area, reading a book. They are wearing a blue and white striped shirt and blue jeans. The background of the photo is a sunset over a body of water with trees in the foreground.

Overlaid on the bottom half of the image is a screenshot of the Public Library website. The website has a dark blue header with the 'PublicLibrary' logo and a 'SELF-SERVICE STATION' button. Below the header is a navigation bar with links like 'Home', 'About Us', 'Services', 'Contact Us', 'FAQ', 'Privacy Policy', and 'Terms of Use'. The main content area is white and features a book titled 'Into the Wild' by Jon Krakauer. The book cover is shown, and the text reads: 'An astonishing true account of psychological suspense, bestselling author Krakauer tells the story of a young man who set out to explore the world's most remote and dangerous places. The book is a masterpiece.' Below the text are three buttons: 'View Book', 'Add to Cart', and 'Add to Favorites'. To the right of the book cover, there is a list of other books by the author, including 'The Call of the Wild', 'The Red Rover', 'The Sign of the Cross', 'The Sign of the Cross', 'The Sign of the Cross', and 'The Sign of the Cross'. At the bottom of the website screenshot, there is a footer with the text '© 2010 Public Library' and a 'Privacy Policy' link.

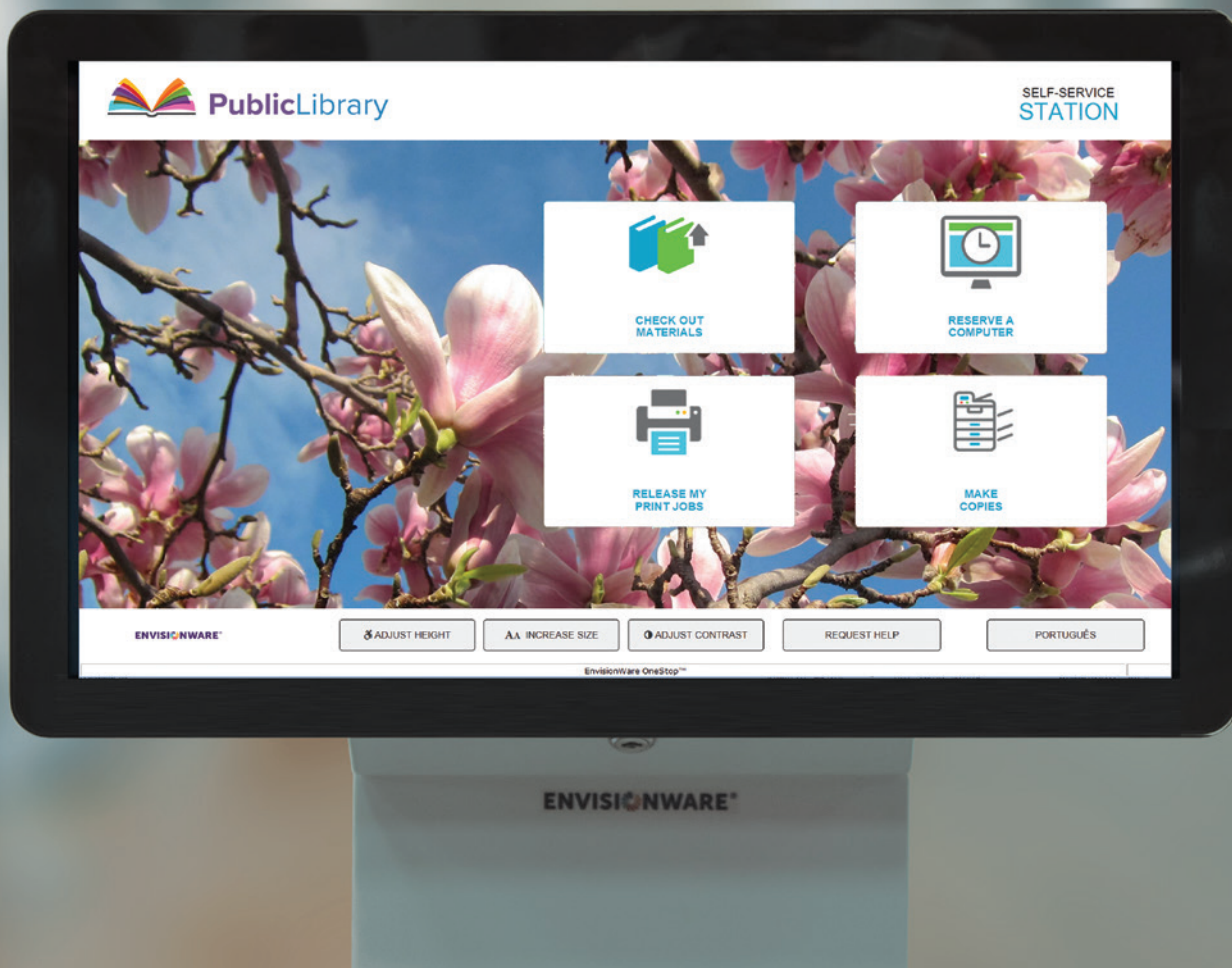


YOUR HARDWARE OR OURS

OneStop is designed to help libraries maximise their resources by using existing hardware or selecting from EnvisionWare's cost-effective suite of self-service hardware. Intuitive and flexible, OneStop automatically adapts based on hardware resolution making it a breeze to install and configure the software.







ENVISIONWARE®

www.envisionware.com

© 2020 EnvisionWare, Inc. | All Rights Reserved
DSOS-200224-A-R6

EnvisionWare Pty Ltd
258 Payneham Road
Payneham SA 5070
+61 8 8132 5800